



Australian Government  
Cancer Australia

# Optimal Care Pathway for Aboriginal and Torres Strait Islander people with cancer

Optimal Care Pathways National Workshop

8 May 2019

Presenters:

Jennifer Chynoweth

General Manager Cancer Care

Caroline Nehill

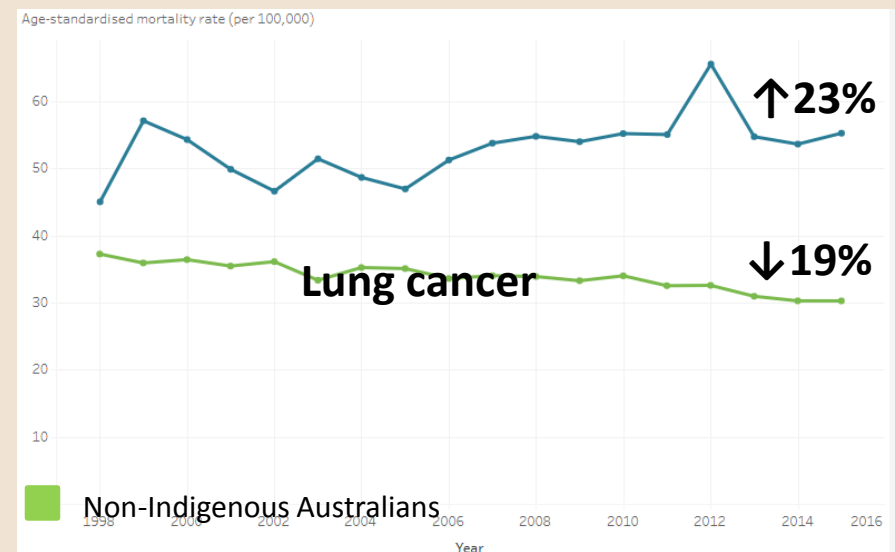
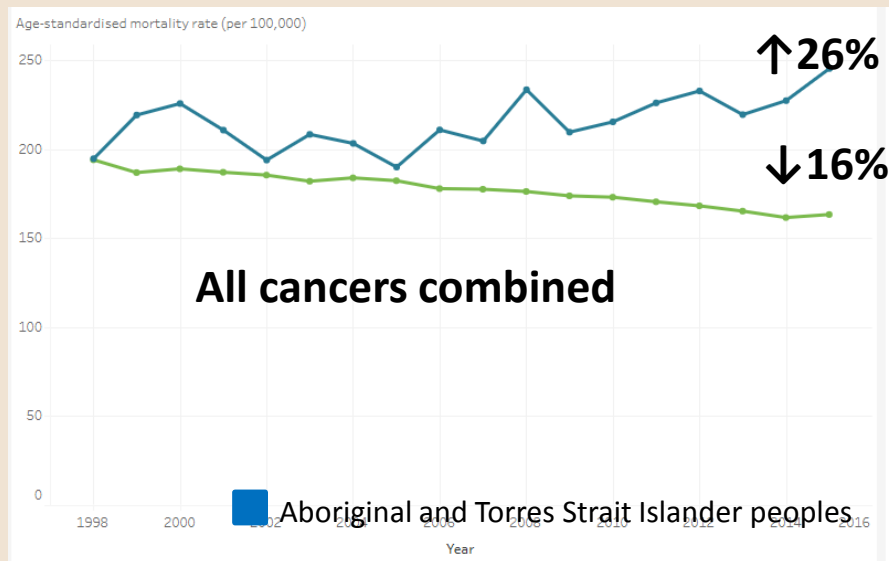
Senior Manager Cancer Care





# Cancer mortality in Aboriginal and Torres Strait Islander Peoples

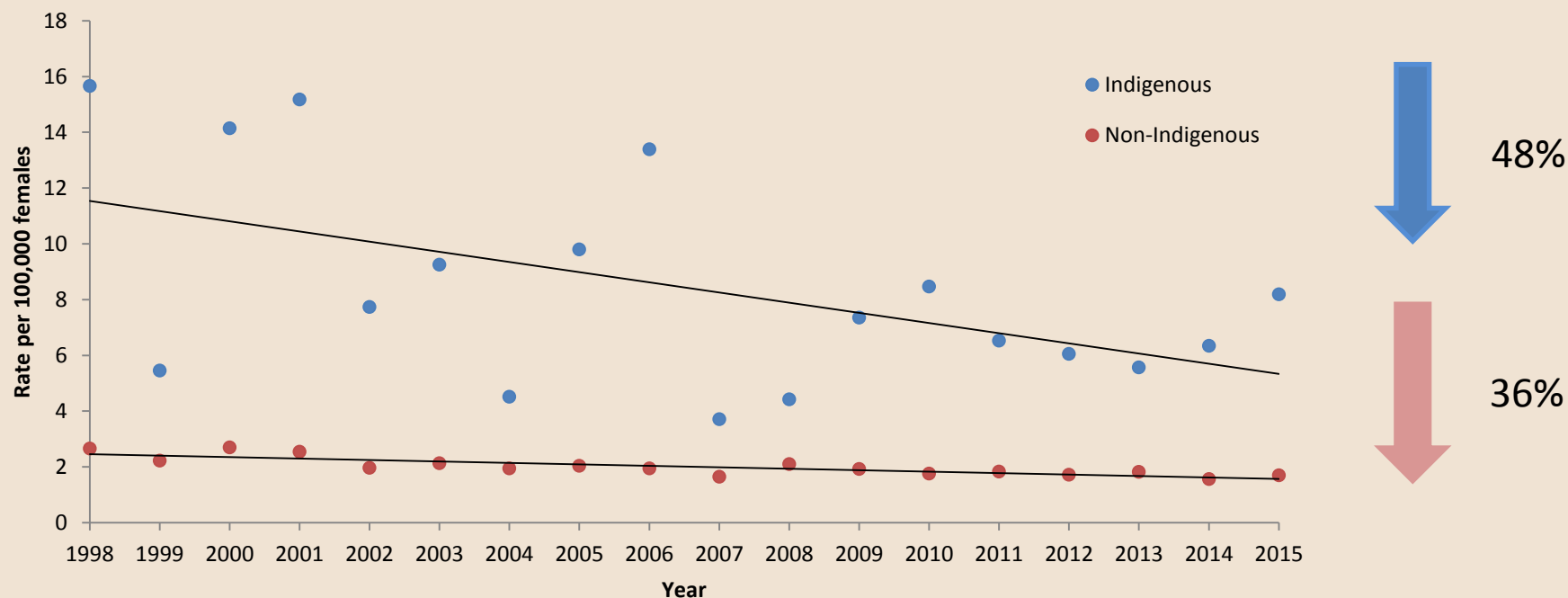
Age-standardised mortality rates, 1998-2015





# Cancer mortality in Aboriginal and Torres Strait Islander Peoples

Age standardised mortality rate for cervical cancer (females)



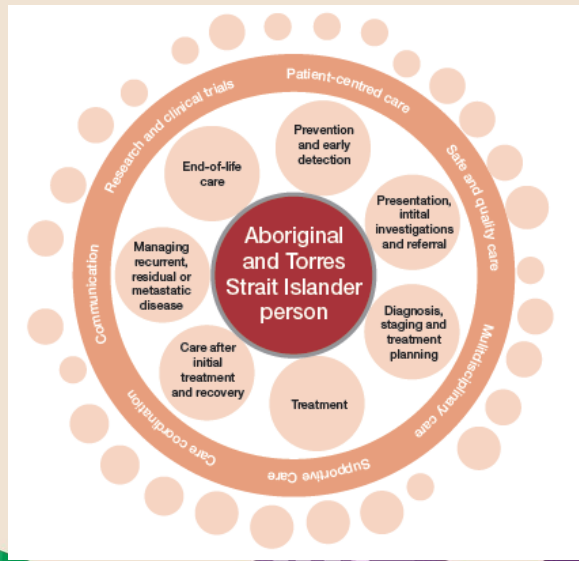
Australian Institute of Health & Welfare 2018. Cancer in Aboriginal & Torres Strait Islander people of Australia. Accessed October 2018;  
<https://www.aihw.gov.au/reports/cancer/cancer-in-indigenous-australians/contents/mortality>

# Optimal Care Pathway for Aboriginal and Torres Strait Islander people with cancer



Australian Government  
Cancer Australia

Guides the delivery of consistent, safe, evidence-based, **culturally safe** and **responsive** cancer care





# Supporting the delivery of optimal care

- ▶ Guidance to achieve optimal care:
  - healthcare environment
  - relationship building with the local community
  - cross-cultural communication
  - Men's and Women's Business
  - health literacy
  - culturally appropriate resources
- ▶ Aboriginal and Torres Strait Islanders peoples governance and involvement





# Optimal cancer care pathway - examples

## Step 2

Presentation,  
initial  
investigations  
and referral

### 2.3 Optimal timeframes for investigations and referrals

- Additional discussions
- Utilise communication technologies
- Involve family members and carers in decision making

## Step 3

Diagnosis,  
staging and  
treatment  
planning

### 3.3 Treatment planning

- Essential that the MDT team includes an expert in providing culturally appropriate care to this population.





# Examples cont.

Support: Assess supportive care needs at every step of the pathway





# Launch

60sec OCP video featuring Tom Calma





# NCERG Decision

## September 2018

- ▶ The National Cancer Expert Reference Group supports Cancer Australia to develop and lead a national strategy for the implementation of the OCP
- ▶ Noted importance of this initiative, and measurement of uptake
- ▶ Indigenous health and cancer a standing item on NCERG agenda

# National implementation strategy

- ▶ Develop a multi-faceted national strategy to guide application of the *Optimal Care Pathway for Aboriginal and Torres Strait Islander people with cancer*
- ▶ Key audiences include:
  - Health services
  - Health professionals
  - Consumers





# Principles for development

- ▶ Informed by input and leadership of Aboriginal and Torres Strait Islander organisations and experts
- ▶ Aboriginal and Torres Strait Islander are engaged in the design
- ▶ Progress a shared, collaborative agenda across sectors
- ▶ Multifaceted and staged approach, to enable sectors and jurisdictions to implement priorities
- ▶ Complementing successful existing activities, structures and resources.

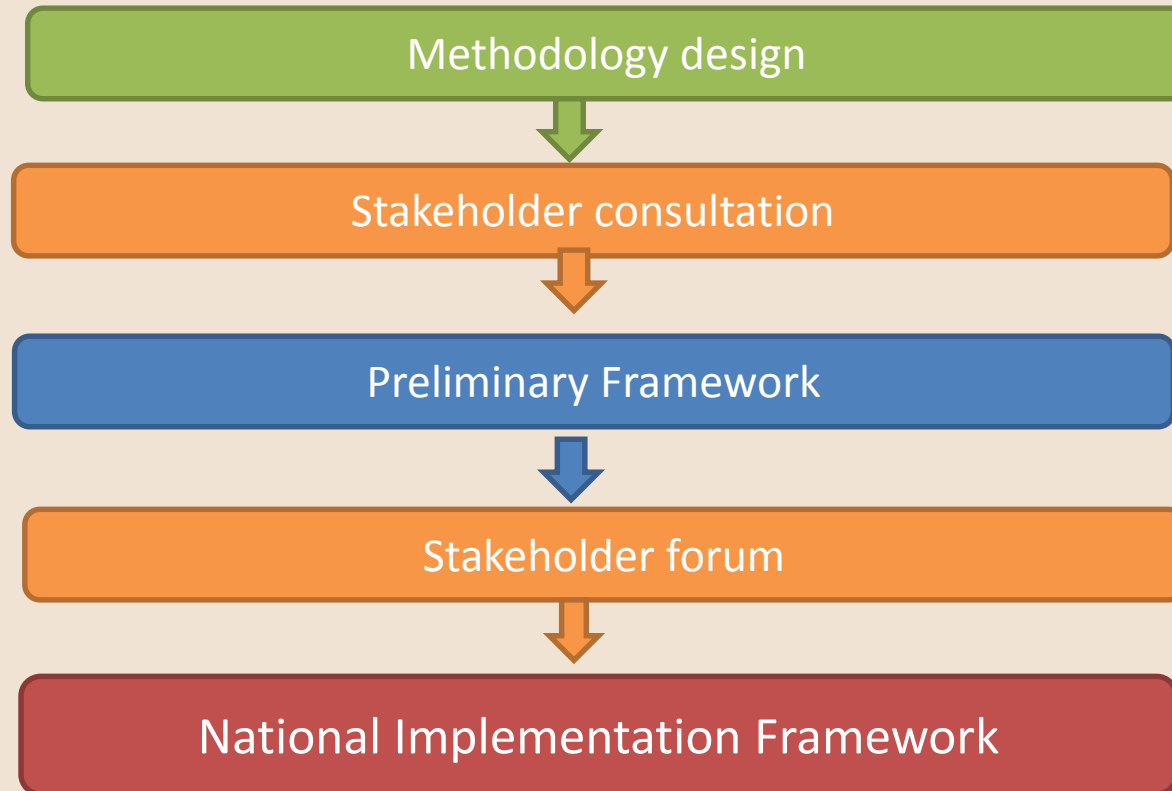


# Development process



Australian Government  
Cancer Australia

Leadership Group on Aboriginal & Torres  
Strait Islander cancer control



# Stakeholder consultations



Australian Government  
Cancer Australia

- ▶ Targeted consultations, broad range of stakeholders
  - Aboriginal health services and peak bodies
  - Health services, cancer services
  - Primary Health Networks
  - Professional colleges
  - Research bodies
  - NCERG representatives
- ▶ Synthesis of key themes
- ▶ Development of preliminary framework





# Outcomes from consultations

## ► Health services

- Champions and clinical leadership to enable change
- Critical importance of integration across services & care pathway
- Increasing profile of cancer as a chronic disease
- Importance of accountability, through effective measurement

## ► Health professionals

- Mandated versus voluntary cultural awareness training
- Need for consistency in cultural safety definitions
- Critical role of Aboriginal Hospital Liaison Officers & community based culturally appropriate health professionals

## ► Consumers

- Supportive of OCP



# Stakeholder consultations



Australian Government  
Cancer Australia

- ▶ Targeted consultations, broad range of stakeholders
  - Aboriginal health services and peak bodies
  - Health services, cancer services
  - Primary Health Networks
  - Professional colleges
  - Research bodies
  - NCERG representatives
- ▶ Synthesis of key themes
- ▶ Development of preliminary framework





# National stakeholder forum

- ▶ Broad sector representation, including NCERG
- ▶ Purpose:
  - To consider and refine the preliminary Framework for its appropriateness and utility in guiding OCP implementation across a range of sectors





# Forum feedback on preliminary Framework

## ► Structure

- Realignment of information, as patient pathway not linear

## ► Complexity

- Prioritise; bite size chunks
- Use infographics and graphs

## ► Content

- Action oriented objectives
- Exemplify uptake through case studies
- Where feasible, include measurement strategies

## ► Different approach for consumers



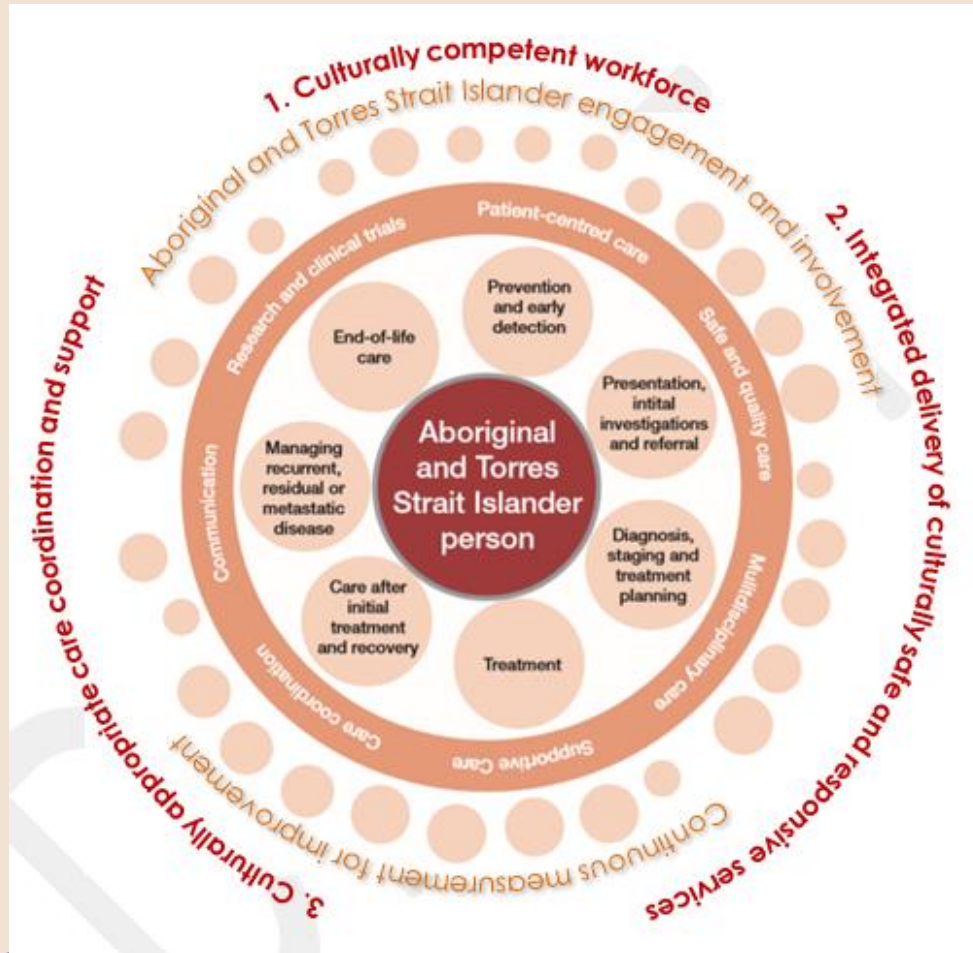


# National Implementation Framework

Health  
service

Case studies

Resources



Health  
professionals

Pathway specific  
implementation  
activities

Measurement

# National strategy



Australian Government  
Cancer Australia

Leadership Group on Aboriginal & Torres  
Strait Islander cancer control

## NCERG national implementation

Implementation  
framework

Consumer  
initiatives

Service level  
support

Policy levers

Ongoing  
Promotion



# Community awareness initiative

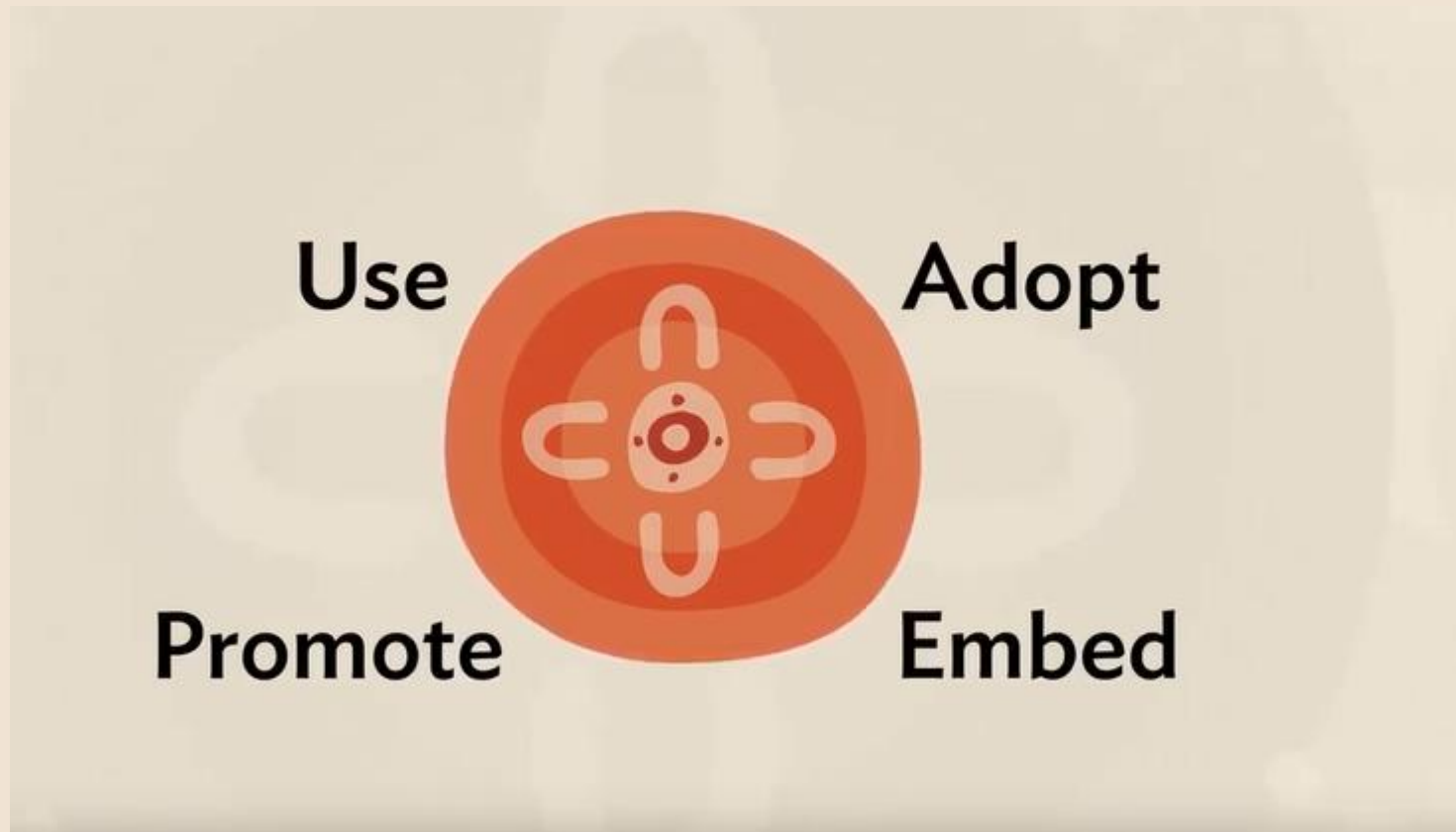
# YARN FOR LIFE

IT'S OK TO  
TALK ABOUT  
CANCER





# Panel discussion





Australian Government  
Cancer Australia

[www.canceraustralia.gov.au/atsi](http://www.canceraustralia.gov.au/atsi)



@canceraustralia



YouTube.com/canceraustralia

